



A: 10 houses /  $559.84\text{m}^2$  (without galleries) or  $679.84\text{m}^2$  (with galleries)

B: 8 houses /  $409.35\text{m}^2$  (without galleries) or  $505.35\text{m}^2$  (with galleries)

C: 32 houses /  $1514.28\text{m}^2$  (without galleries) or  $1695.98\text{m}^2$  (with galleries)

A+B+C= 50 houses /  $2483.47\text{m}^2$  (without galleries) or  $2881.17\text{m}^2$  (with galleries)

SPA  $97\text{m}^2$  +  $164\text{m}^2$  (BASEMENT SPA) + 24 (SPA GALLERY) =  $285.27\text{m}^2$  (with gallery)

Bar/restaurant =  $119\text{m}^2$

Parking/storage/ramps/staircases =  $1837.78\text{m}^2$

TOTAL:  $3000\text{m}^2 - 10\% = 2700 - 2483,41 (A+B+C) = 216,59 - 97 (SPA) = 119.32\text{m}^2$

OR

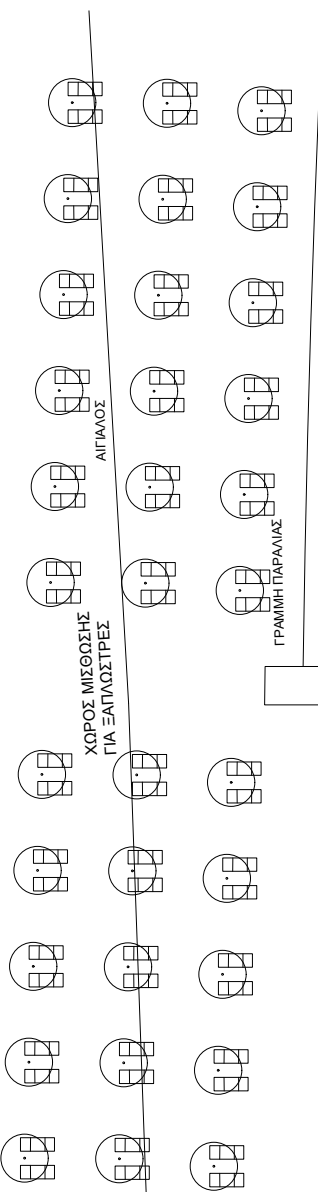
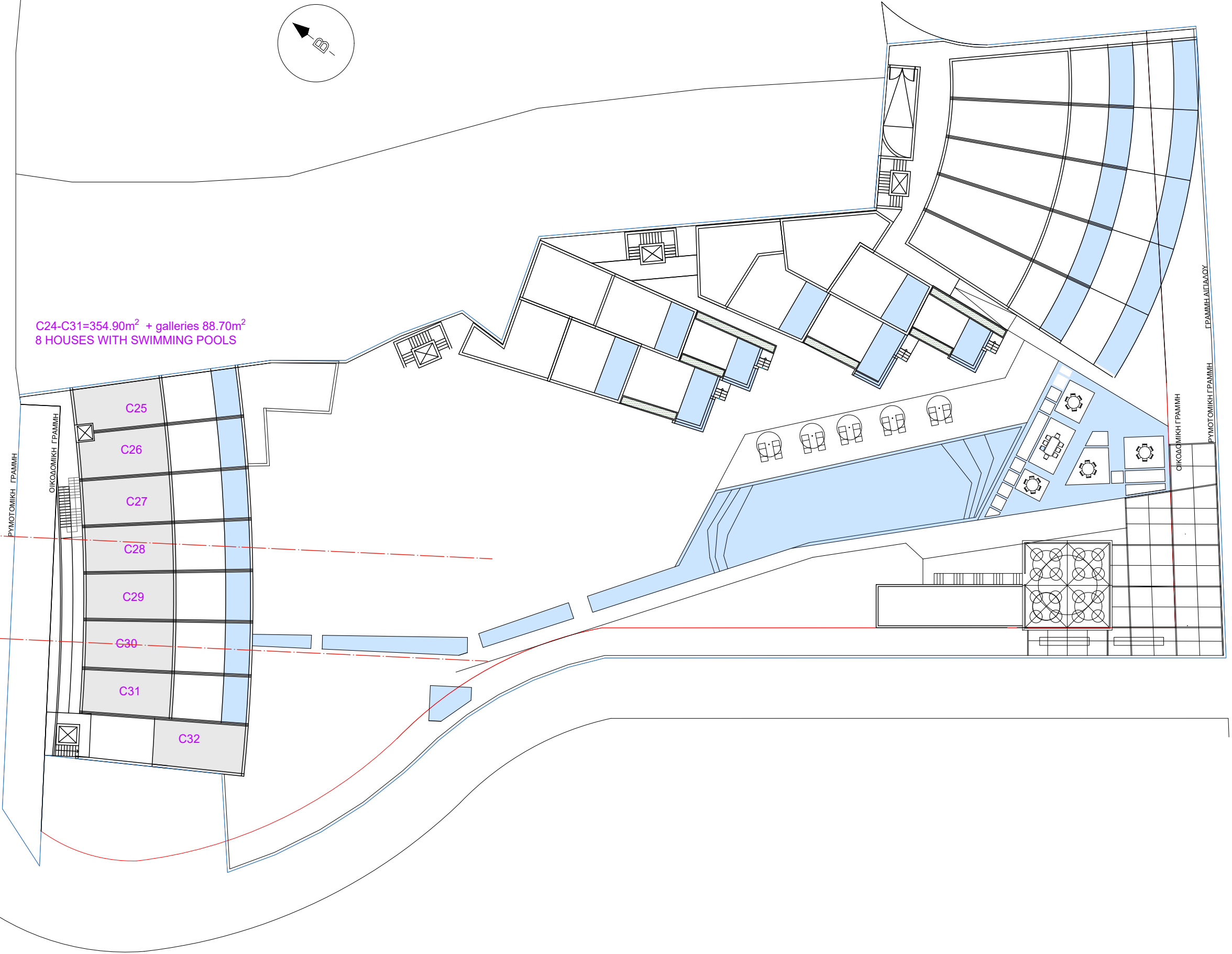
TOTAL:  $3000\text{m}^2 + 10\% - 10\% = 3000 - 2483.41 (A+B+C) = 516.59 - 97 (SPA) = 419.59\text{m}^2$

ΔΕΝΑΣ ΕΠΙΤΡΧ. ΟΔΟΥ ΛΕΥΚΑΔΟΣ - ΝΥΔΡΙΟΥ



ΠΡΟΣ ΔΕΥΚΑΔΑ

C24-C31=354.90m<sup>2</sup> + galleries 88.70m<sup>2</sup>  
8 HOUSES WITH SWIMMING POOLS



ΘΑΛΑΣΣΑ

SECOND FLOOR LEVEL

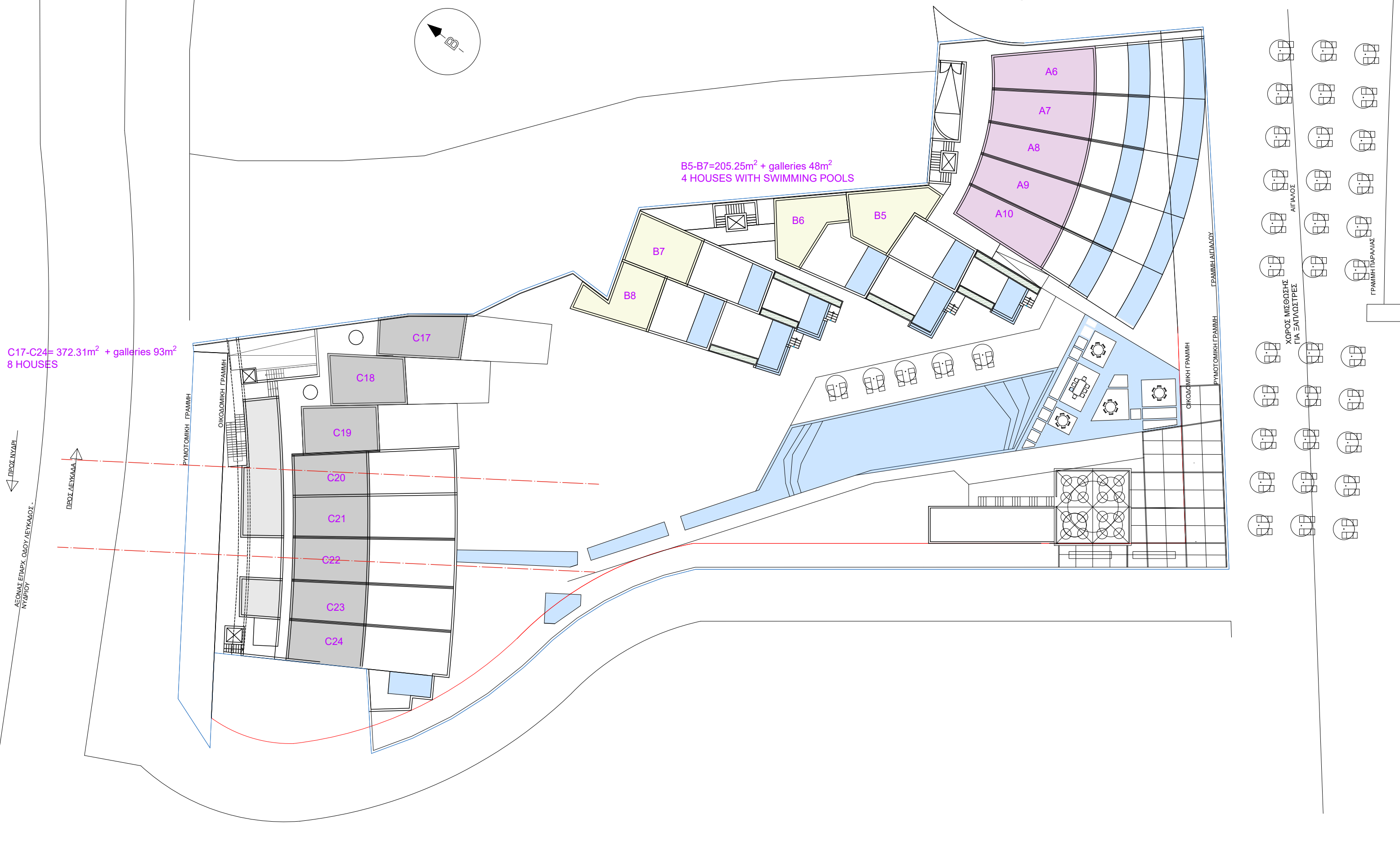


ΔΕΥΤΕΡΗ ΕΠΙΣΤΑΣΗ  
ΝΥΚΤΙΟΥ

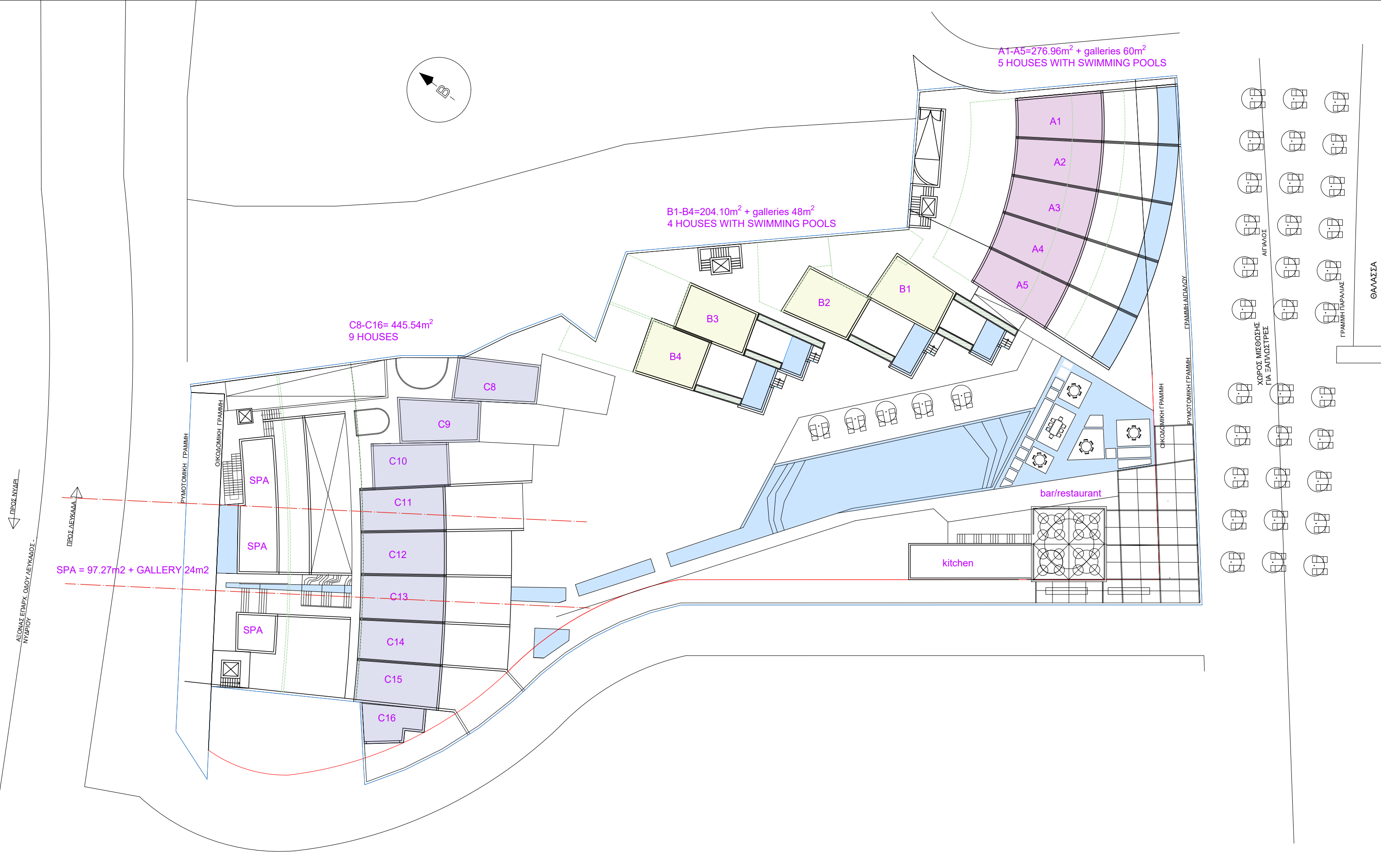
C17-C24= 372.31m<sup>2</sup> + galleries 93m<sup>2</sup>  
8 HOUSES

B5-B7=205.25m<sup>2</sup> + galleries 48m<sup>2</sup>  
4 HOUSES WITH SWIMMING POOLS

A6-A10=282.88m<sup>2</sup> + galleries 60m<sup>2</sup>  
5 HOUSES WITH SWIMMING POOLS

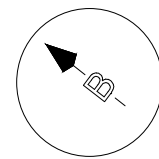


FIRST FLOOR LEVEL

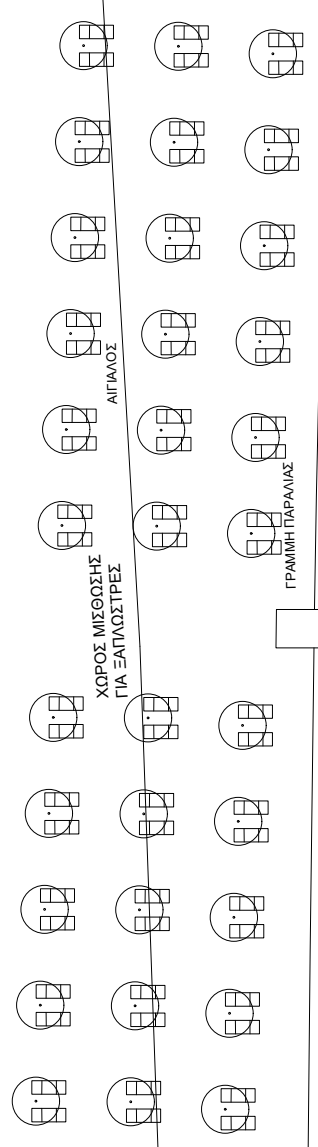
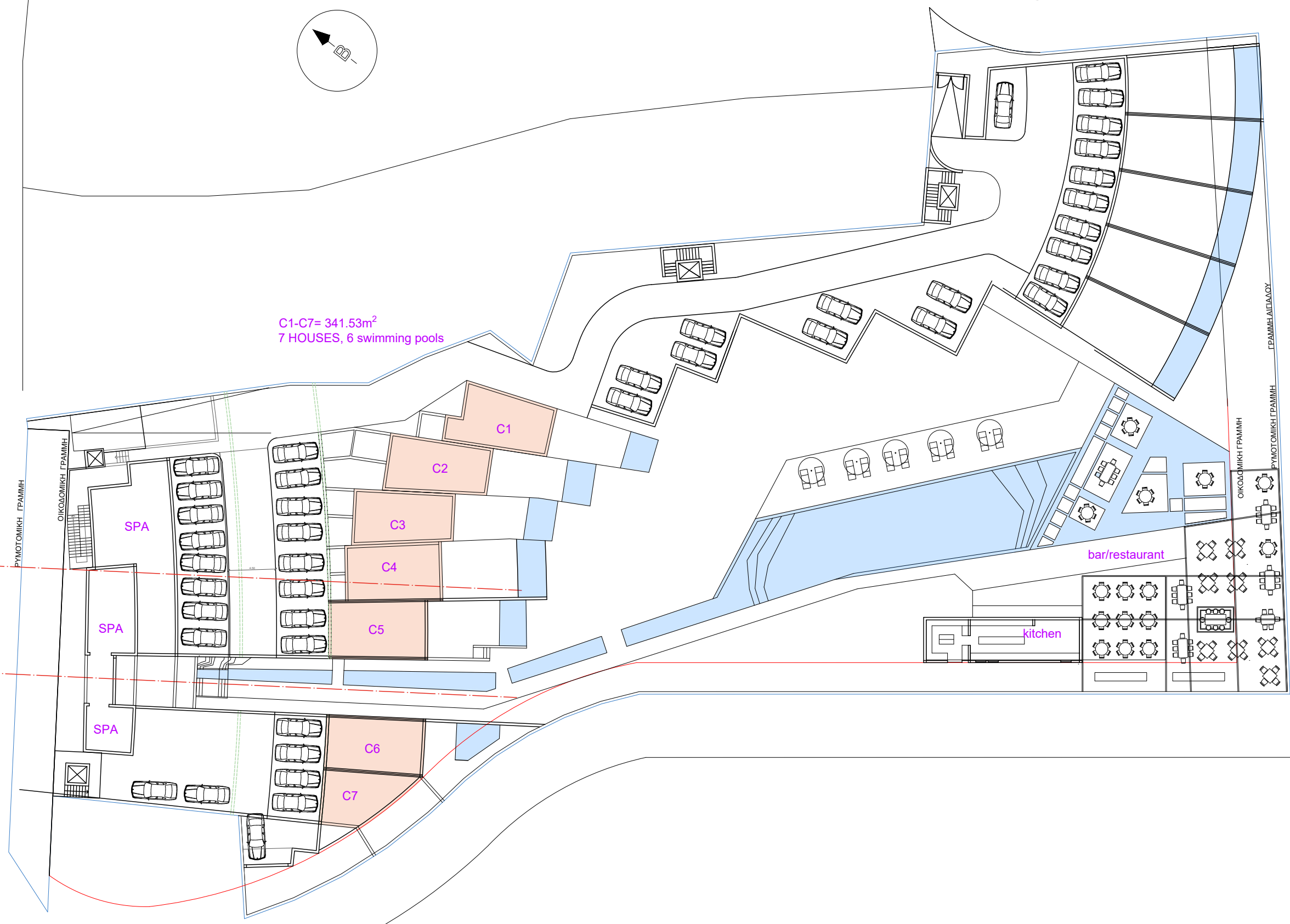


ENTRANCE LEVEL

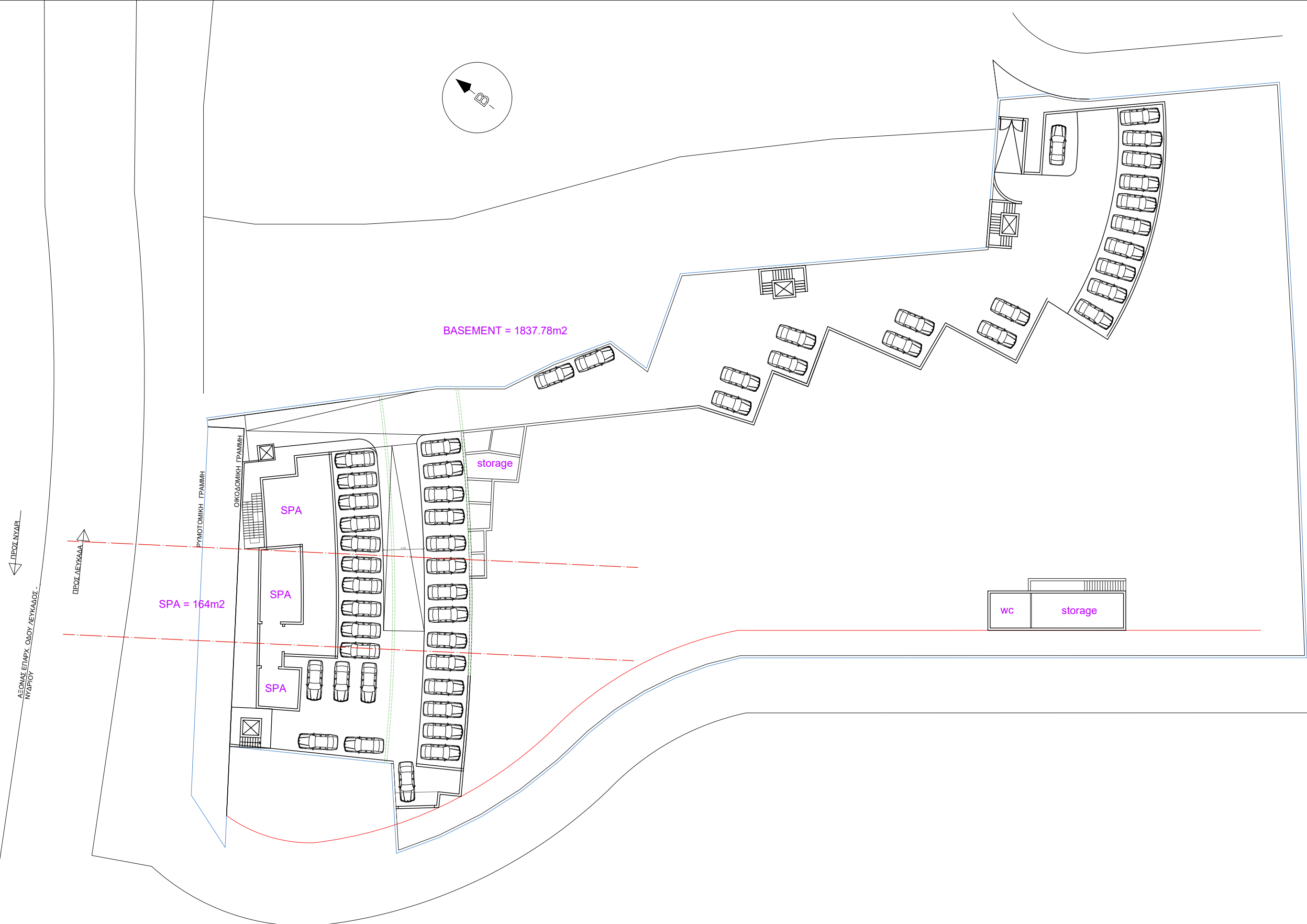
ΔΕΥΤΕΡΗ ΕΠΙΣΤΑΣΗ  
ΠΡΟΣ ΝΥΔΡΙ  
ΠΡΟΣ ΔΕΥΚΑΛΑ



C1-C7= 341.53m<sup>2</sup>  
7 HOUSES, 6 swimming pools



GROUND FLOOR LEVEL



BASEMENT FLOOR PLAN

